

A HOME WHICH MEETS A NEED.

MANNA MEAD, BLACKHEATH.

One of the most difficult things possible is to find a home where chronic invalids, or persons who require some care, or wish to reside permanently in a house supervised by a trained nurse, can be received on reasonable terms.

For this class the ordinary medical and surgical home, with its constant succession of acute cases, is not suited, even if the terms were not prohibitive, to most people wishing to make a prolonged stay, and we believe we are doing real service by directing attention to the advantages offered at Manna Mead, 17, The Grove, Blackheath, S.E., where the principals, Mrs. Knight and Miss Tapley Spurr, receive guests for board residence and ordinary nursing attendance, from £2 2s. a week, with special nursing, medical electricity, massage, &c., from £3 3s. a week.

The dietary, so all-important a department in a home of this kind, is under the personal direction of Mrs. Knight, who is a trained expert in the various branches of cooking, including fruitarian and invalid cookery, and of Miss Tapley Spurr, who superintends the nursing department and is a certificated nurse, a certi-

fied midwife, and a certificated masseuse, and something more besides, for her whole heart is in her work, and she is never so happy as when with, and working for, the patients whose well-being she regards as her life's work.

All the visitors who are able take their meals together in the cheerful dining-room, and its well-appointed table, presided over by the principals, gives the impression of that in an ordinary home for the reception of paying guests, the atmosphere of sickness being quite in the background, as, indeed, it is throughout the house. One reason for this is that no surgical and operation cases are received, the bustle inseparable from these being considered undesirable for the class of cases for which the Home specially caters—chronic invalids needing a permanent home, those suffering from nervous disorders, and tired workers needing change of air and scene.

As an illustration of the way in which the Home fulfils its purpose of offering permanent care to invalids, we may mention that one visitor who went there when it was first opened fourteen years ago is there still and likely to remain, so well content is she with her quarters.

Some idea of the Home may be gained from our illustration, from which it will be realised that it is a spacious, substantially built house. The situation is especially fortunate, as it is at the corner of the Grove, close to Blackheath Hill, and within five minutes' walk of that station, and yet it has a south aspect, overlooking the Heath, which ensures quiet, and offers endless possibilities for walks in splendid life-giving air.

The reception rooms are furnished both with great taste and with regard to the comfort of the visitors. The drawing-room is fortunate in having four large windows set in a curve at the further end, which afford a cheery outlook over the garden,

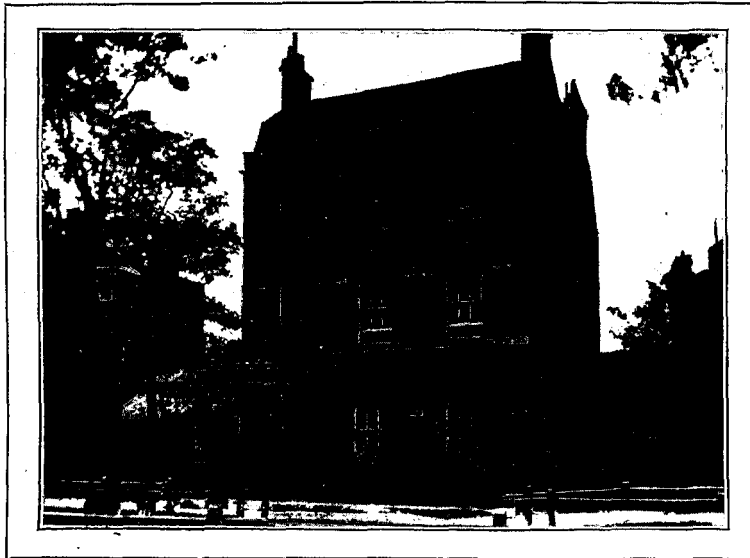
and give distinction and charm to the room. The lounge below has a similar advantage, and is obviously a favourite room with visitors.

All over the house the impression one receives is the same: satisfaction and pleasure on the part of the patients and visitors with the arrangements and the care they receive. Competence and devotion to the interests of

their guests on the part of the principals. No wonder that the Home is a valuable agency in the restoration to health and strength of those who come under its care, or that it is used as a permanent residence by those who while not acutely ill, yet feel the need and the comfort of skilled care.

In addition to the Home itself, there is a cottage at the end of the grounds where additional patients are received, chiefly those suffering from rheumatoid arthritis and kindred complaints. That the cottage is always full speaks for the comfort and satisfaction of those who reside there.

We advise those who are seeking a home of this kind for themselves, or for others, to pay a visit of inspection to Manna Mead, when we believe they will be as charmed with the advantages it offers, and its restful, happy atmosphere, as was the writer.



MANNA MEAD NURSING HOME.

[previous page](#)

[next page](#)